



BIGGIN HILL
PRIMARY SCHOOL
*Part of the Charles Darwin
Academy Trust*

BHPS SAFEGUARDING

BULLETIN

2022/23 #1

A MESSAGE FROM OUR DESIGNATED SAFEGUARDING LEAD

Dear Parents and Carers,

This is the first safeguarding bulletin of the academic year. As a society and as a school community we have faced many significant challenges over the last few years and we are aware that the impact from the pandemic and the cost of living crisis have taken their toll on many individuals and families. This edition contains information about sources of support for a variety of issues which I hope you will find helpful. This bulletin also contains important information about attendance and a fact sheet for parents and carers about WhatsApp.

My very best wishes,

Mrs Freeman

Headteacher and Designated Safeguarding Lead

View our Child Protection and Safeguarding Policy at:

<https://www.bigginhillprimary.com/docs/BHPS-Child-Protection-and-Safeguarding-Policy.pdf>

View our previous BHPS Safeguarding Bulletins at:

<https://www.bigginhillprimary.com/parent-portal/safeguarding-bulletin>.

SAFEGUARDING LEADS

Hannah Freeman

Headteacher and Designated

Safeguarding Lead

h.freeman@bigginhillps.com

Kate Lawrence

Deputy Headteacher and

Deputy Safeguarding Lead

k.lawrence@bigginhillps.com

Kathryn Sargeant

Family Liaison, Mental Health

Lead and Deputy

Safeguarding Lead

k.sargeant@bigginhillps.com

Attendance Matters

This week has been a good week - we have had several days above 96% attendance! Please keep up the good work!

Historically we have found ourselves in the lowest 20% of similar schools for attendance which is a statistic that may surprise you and a position that we do not want to return to this year! Did you know that in order for us to get good or better at our next Ofsted inspection, we must ensure that our attendance figures stay in line with or above national averages. We are currently just in line - let's try to keep it that way!

One of the major issues that impacts attendance here is term time holiday - please be aware that no term time holidays will be authorised (apart from in exceptional circumstances) and the Local Authority will issue a fine for holidays taken in term time. The fine is per parent, per child.

Please help us by ensuring that children are in school every day and on time.

**If you are concerned
about the safety or
wellbeing of any child
please contact one of us
immediately.**



School hours:

01959 575846

In the event of full school closure - a school
mobile number will be provided.

*Our Safeguarding Guide is available in our main reception
area and can also be found on our website:
<https://www.bigginhillprimary.com/> in both screen reading
and tri-fold printing format.*

**Safeguarding is our
#1 priority
every day.**

Sources of support for you

If you feel like you're struggling right now, you're not alone. We've gathered contact information for some helplines, so you know where you can turn to if you need some help. **Remember, it's ok not to be ok.**

Family life

Family Lives (support on any aspect of parenting and family life. Freephone) | 0808 800 2222 | askus@familylives.org.uk | familylives.org.uk

Mental health

For you:

- Samaritans (free) | 116 123 | jo@samaritans.org | samaritans.org
- Mind (calls charged at local and network rates) | 0300 123 3393 | info@mind.org.uk | mind.org.uk
- If you're worried about your child: Young Minds Parents Helpline (free) | 0808 802 5544 | <https://bit.ly/3p8kpDp>

Domestic abuse

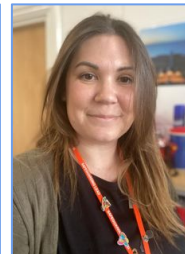
- National Domestic Abuse Helpline (free) | 0808 2000 247 | nationaldahelpline.org.uk
- Men's Advice Line (free) | 0808 8010 327 | mensadviceline.org.uk
- Galop (free, LGBT+) | 0800 999 5428 | galop.org.uk

Alcohol, drugs and gambling

- Drinkline (free) | 0300 123 1110
- Drinkchat (calls charged at local and network rates) | 0300 123 1110 | bit.ly/2NoOx7T
- Frank (for support around drugs and alcohol. Calls charged at local and network rates) 0300 123 6600 talktofrank.com
- National Gambling Helpline, run by Gamcare (free) | 0808 8020 133 | gamcare.org.uk
- Adfam (for families of those affected by drug, alcohol and gambling problems) | find local support on their website: adfam.org.uk

You will find our Safeguarding Leads in orange lanyards.

We are all at the gate, or in front of the KS1 building, in the morning and at least one of us is on the gate at the end of the school day.



Here at BHPS we firmly believe that children need to feel safe and happy in order to be able to learn and for that reason safeguarding is right at the top of our priority list. We have robust procedures for keeping children safe while they are in our care.

<https://www.bigginhillprimary.com/safeguarding>