



## MESSAGE FROM MRS FREEMAN



Dear Parents and Carers,

We were very sorry to have to enact our Outbreak Management Plan in school this week. We must do all we can as a school to minimise transmission and therefore these additional safety measures are absolutely necessary. I would like to extend my sincere apologies to parents and carers of 5F and Miss Farrell; having to postpone a class assembly is never something I want to do and I look forward to being able to reschedule this very soon.

On Monday it was a pleasure to host our first Class Representative and Parent Forum group meeting. This is a new initiative at the school and it will be an invaluable tool for gathering regular feedback from parents and carers. Please look out for posters in class windows displaying who your forum and class representative is. On our main reception window, we will also have a full list of all class representatives across the school. Please keep an eye out for an article next week on how to communicate with your class representative.

On page 2 you will find an article from Ms Reed and Miss Castledine about the year 3 trip to Horton Kirby Education Centre - it very much sounds like this was a trip that the children enjoyed!

We sadly have also needed to postpone 'Tea and Tots' this week and next, however, we hope to be able to restart this on Tuesday 1st February - please do keep an eye out for a confirmation email nearer the time.

We are seeing a notable increase in the number of children who are arriving late for school, which is a concern. We encourage all parents and carers to use our 'Soft drop' from 8.40-8.50am as this really helps children settle and have a good start to the school day - registers are taken at **9am**. The negative impact that lateness can have on both the children and running of the school day is significant. I know and understand that there are times when lateness is unavoidable, but these occasions should be few and far between. Please ensure that children are here on time - it really is one of the best life lessons that you can teach them!

Thank you to Mrs Walker for helping us to go through a mountain of books in school on Wednesday - it was a huge help to us and will enable us to set up our external library on both playgrounds.

We were pleased to be able to send out a flyer on Thursday to year 5 and 6 parents and carers about *Monte Lynch Cricket Coaching* who are running an external club during both the February and May half terms at Charles Darwin School. Monte is currently delivering some wonderful

*... continued*

## STARS OF THE WEEK

Ludwig van Beethoven:  
**Madison G**

Eileen Collins: **Ralph P**  
Tim Peake: **Harry M**  
Eugenie Clark: **Bella R**  
Greta Thunberg: **Willow L**  
Josephine Baker: **Cameron M**  
Jesse Owens: **Ronnie S-M**  
Lek Chailert: **Whole Class**  
Marcus Rashford: **Keira R**  
Louis Braille: **Mia P**  
Leonardo Da Vinci: **Mia-Lily K**  
Ida B. Wells: **Lily-Rose K**  
Mo Farah: **Harrison G**  
Laura Dekker: **George C**  
Jessica Ennis-Hill: **Jake K**

***'Congratulations'***

*Weekly Whole School  
Attendance 89.7%*

**Weekly Class Attendance  
(Thursday to Thursday)**

*Excellent attendance 'gold'*  
**98-100%**

*Good attendance 'green'*  
**96-97.9%**

**Eugenie Clark: 96.3%**  
**Laura Dekker: 96.1%**

***At BHPS every school  
day matters.***

## HOUSE POINTS

1st: **ATTENBOROUGH**      2nd: **HAWKING**  
3rd: **ROWLING**              4th: **HOLMES**

***'Congratulations to our winners this week'***

## MESSAGE FROM MRS FREEMAN

... continued

cricket to our year 6 children - they are loving these sessions and there are some budding cricketers for sure! For more information about these external half term clubs, please visit:

<https://www.montelynychcoaching.co.uk/>.

Please remember the importance of wearing masks on site, and if you are coming into school for a meeting or another reason, we politely request that you complete a LFD test beforehand. There are changes to operational guidance for schools that will come into effect on Monday but these changes will not be applicable to us until we have reached the end of next week, which is when we will hopefully be able to lift the temporary COVID restrictions that we have in place. I will provide more information about this next week.

I think we are all very hopeful that we can see some light at the end of the tunnel and we are looking forward to much more normal spring and summer terms! Thank you so much for your continued support and cooperation.

Have a fabulous weekend.

My very best wishes,

*Mrs Freeman*

Headteacher and Designated Safeguarding Lead

## DIARY DATES

*Keep a note!*

### 25th January:

**\*\* CANCELLED \*\***

Tea and Tots, 1.30-3pm, KS1 Hall.

### 25th January:

Year 5 Swimming.

### 26th January:

KS2 'Book Swap' starts today at lunchtime, KS2 playground outside PPA room.

### 28th January:

**\*\* POSTPONED \*\***

Y4B Assembly, 9am, KS2 Hall. This will be rescheduled.

### 31st January:

**\*\* POSTPONED \*\***

Ambassadors Assembly - this will be rescheduled.

### 1st February:

Tea and Tots, 1.30-3pm, KS1 Hall.

### 3rd February:

Outreach Session: Wellbeing and Anxiety, 9-10am, Hall.



## YEAR 3

*Horton Kirby Environmental  
Education Centre*

On Tuesday 11th of January, Year 3 went on a trip to Horton Kirby Environmental Education Centre to learn all about the Victorians. The centre used to be a Victorian school so all of the children were assigned the name of a former pupil at the school. We discovered that some children had worked in mills and bakers' shops nearby as well as going to school.

First we went for a walk around the village to look for clues about the past. We had some old photographs and compared these to the modern locations. We then played some Victorian playground games like skittles and skipping. In the afternoon we had a Victorian lesson in the classroom. We sat at real Victorian desks and had to use slates and chalk. We had to practise our reading, times tables and drawing. The teacher was very strict.

***Ms Reed and Miss Castledine***

## YEAR 1

*A spaceship has crash landed!*



It's been an exciting couple of weeks in Year 1. Last week an alien spaceship crash landed outside the Year One classrooms and we all went outside to investigate! We wondered if there was anyone on board.



This week a little alien was found in the middle classroom. She was very afraid so we made her a little bed and we are now finding out more about her. So far, we know her name is Beegu and she is lost. We can't wait to find out more.

***Mrs Clark, Mrs Gilham, Mrs Lucas and  
Miss Turner***



## A MESSAGE FROM THE *Inclusion Team*

Hi everyone,

If your child has a learning plan you will have received notification last week of this being reviewed via Edukey and this can be viewed via your login. If your child has a learning plan and you have not received notification of a review, please leave a comment on your child's page and we will be able to update you.

For parent's of our children with more complex needs, you will receive a letter inviting you in for a meeting to review your child's provision.

Please look out for this on Monday.  
Have a fabulous weekend and take care,

Best wishes,  
**Mrs Lawrence**



**Mrs Lawrence**  
Deputy  
Headteacher,  
Inclusion Lead  
and Deputy  
Safeguarding  
Lead  
[k.lawrence@bigginhillsps.com](mailto:k.lawrence@bigginhillsps.com)



**Miss Knott**  
SENCo Assistant  
[r.knott@bigginhillsps.com](mailto:r.knott@bigginhillsps.com)



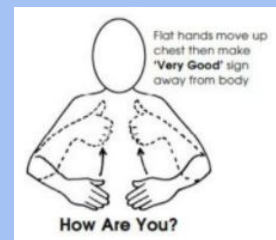
**Mrs Sargeant**  
Family Liaison and  
Mental Health Lead  
[k.sargeant@bigginhillsps.com](mailto:k.sargeant@bigginhillsps.com)

## LANGUAGE *Of the Week*

*(for next week)*  
**Irish**

**Hello:** Dia Dhuit  
**Good Morning:** Dia is Muire Dhuit  
**Good Afternoon:** Dia Dhuit

## MAKATON *Sign of the Week*



**Miss Knott, SENCo Assistant**

## RECEPTION *People Who Help Us*



This half term our topic is 'People Who Help Us'. We have been looking at different emergency vehicles and how we can tell the difference between them. We then had a go at creating our own at our creative table - it took us a few days but they are fantastic! It has been a lot of fun trying on the different costumes that we have and role playing the different characters. Can you guess which professions we are?



**Miss Powell and Mrs Churchward**

## READING

*A note from our Literacy Lead*

### Reading at Home

It is really important that every child reads at home. Ideally, there should be a balance of reading to an adult at least 3 times a week (preferably their school reading book) and sharing a book of their choice with an adult at other times. If you would like support with this then please speak to your child's class teacher. There is a genre, author or book out there for every child!

### Book swap

Our KS2 book swap starts on **Wednesday 26th January**. Pupils are invited to bring in a book from home that they have enjoyed reading and swap it for a different book to read. Every Wednesday lunchtime pupils will be able to swap their book for another one. The book swap will be held in the playground outside the PPA room.

### Take a book home

Our 'borrow a book' scheme will be starting soon. Specific children will be given a new book in one of our borrowing bags with a sachet of hot chocolate and invited to read and share it at home with their family.

**Mrs Lucas, Literacy Lead, Biggin Hill Primary School.**





**BIGGIN HILL**  
PRIMARY SCHOOL  
*Part of the Charles Darwin  
Academy Trust*

## IN-YEAR ADMISSION TOURS!

We are able to run bookable tours for in-year admissions.  
*Come and meet our amazing children and see our school in action.*

To book a tour please contact Mrs Helps via email  
at [s.helps@bigginhillps.com](mailto:s.helps@bigginhillps.com) or at 01959 575846

Visit our website at: [www.bigginhillprimary.com](http://www.bigginhillprimary.com)

*'We take pride in everything we do'*

*Our school prospectus can be viewed via our website at:*

<https://www.bigginhillprimary.com/docs/BHPS-21-22-ONLINE%20PROSPECTUS.pdf>.



## PARKING OUTSIDE SCHOOL

Please can we ask parents and carers to park and drive respectfully outside our school and think of our local residents when parking. Please also be aware of the following restrictions outside our school. We are aware it is congested at drop off and collection - please help us to keep up our good relationship with our local residents by parking respectfully outside our school.

## SYSTEMS OF CONTROL REMINDER

### COVID SYSTEMS OF CONTROL

Please can I also remind parents and carers to make sure that children do not come to school if they have any of the three key COVID symptoms. If children do exhibit any of these symptoms they should be taken to have a PCR test.

## COVID-19 UPDATES AND USEFUL LINKS

Regular lateral flow testing of people without symptoms is important to help stop the spread of the virus, protect loved ones and is in the interest of public safety. More information can be found at: <https://www.nhs.uk/conditions/coronavirus-covid-19/testing/regular-rapid-coronavirus-tests-if-you-do-not-have-symptoms/>.

Further guidance can be found at:

[https://www.gov.uk/government/news/confirmatory-pcr-tests-to-be-temporarily-suspended-for-positive-lateral-flow-test-results?utm\\_medium=email&utm\\_campaign=govuk-notifications&utm\\_source=29133936-ab09-4ad6-b091-6438d44c9026&utm\\_content=immediately](https://www.gov.uk/government/news/confirmatory-pcr-tests-to-be-temporarily-suspended-for-positive-lateral-flow-test-results?utm_medium=email&utm_campaign=govuk-notifications&utm_source=29133936-ab09-4ad6-b091-6438d44c9026&utm_content=immediately).

<https://www.gov.uk/coronavirus>

## IMPORTANT NOTE

We are working hard to keep everyone as safe as possible in school. We must ask that if your child is unwell with any of the key symptoms, please keep your child at home and follow the government guidance. This is very important for us **all** in making sure everyone is as safe as possible.

**Mrs Freeman and Mrs Lawrence**