



**EDUCATION WELFARE SERVICES**  
*Improving Attendance since 2007*

## **Biggin Hill Primary School**

# **WPA Education Welfare Services Attendance Report September 2014 to February 2015 Academic Year 2014-2015**

**Linda Herd - Senior Education Welfare Officer**

WPA Education Welfare Service

90 Central Parade New Addington Croydon Surrey CR0 0JB

Tel No's: 0208 462 2716 – 01689 843322

Email: [admin@school-attendance.org.uk](mailto:admin@school-attendance.org.uk)

[www.school-attendance.org.uk](http://www.school-attendance.org.uk)



WPA Education Welfare Services is a specialist and leading independent Education Welfare Service provider in South East England. Established in 2007, we have a proven track record for improving overall attendance and outcomes for children in schools and academies.

Biggin Hill Primary School has invested in WPA Education Welfare Services to provide the statutory functions in securing children's attendance, dealing with the welfare and safeguarding of the children as well as supporting the school to maintain good levels of attendance.

Meetings held	Cases opened	Home visits carried out	Fixed Penalty Warnings issued	Fixed Penalty Notices issued	Meetings With School Staff	Meeting Letters Sent
1	10	0	13	0	12	6

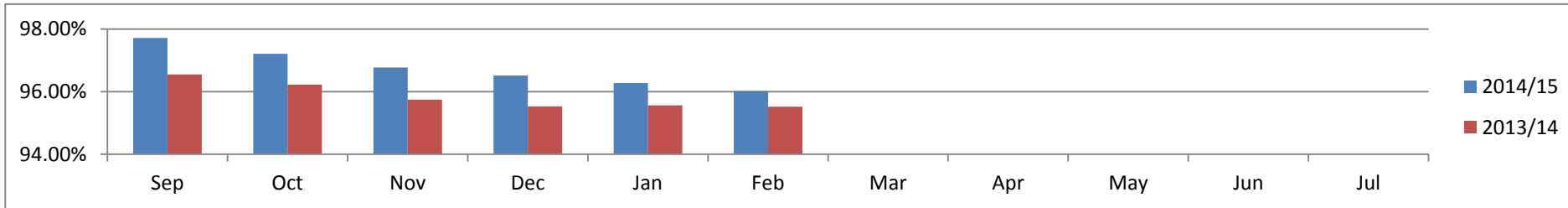
#### **Actions taken to Improve Attendance:**

- School Attendance and Punctuality letters reviewed and Attendance monitoring system agreed with school. School Attendance Policy reviewed and amendments suggested.
- Fortnightly meetings with Attendance Lead and Attendance Officer to discuss attendance where it has fallen below 92% and pupils with poor punctuality. School action or referral to EWO agreed.
- Meetings with parents to discuss reasons for poor attendance and agree targets to improve it.
- Home visits where parents have not engaged with EWO in school and to investigate any safeguarding concerns.
- Liaison with, and referrals to external agencies as necessary
- Attendance at Child Protection Conferences, Core Groups and professionals meetings, as appropriate and if required

Note : Attendance in Year 4 is the lowest in Key Stage 2 which reflects the number of pupils in that year group which is the lowest in the school. Attendance in Reception year is also low and this is being closely monitored as the children become statutory school age.

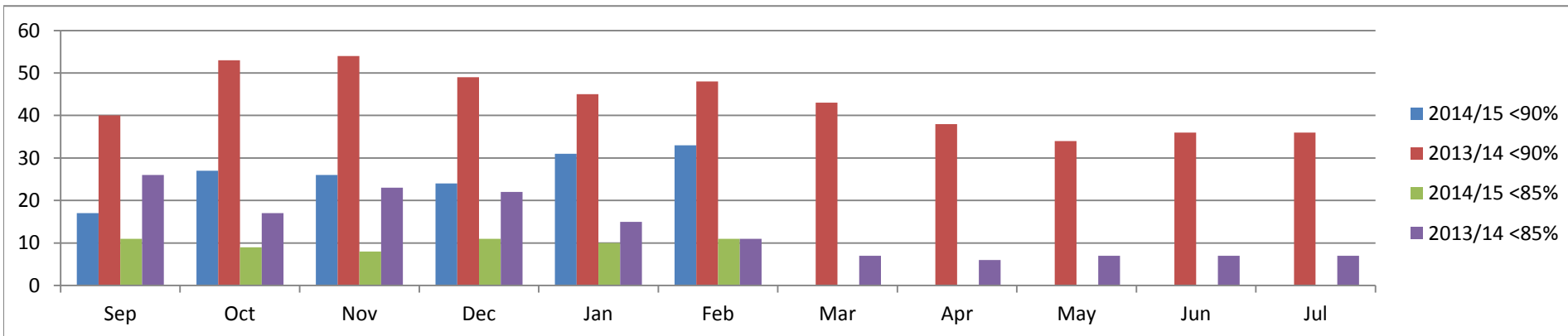
**Monthly % attendance data:**

	Sep	Oct	Nov	Dec	Jan	Feb	Mar	Apr	May	Jun	Jul
<b>2014/15</b>	97.71%	97.21%	96.77%	96.51%	96.27%	96.02%					
<b>2013/14</b>	96.55%	96.22%	95.74%	95.53%	95.56%	95.52%					



**No. of pupils/students below 90% & 85% (PA)**

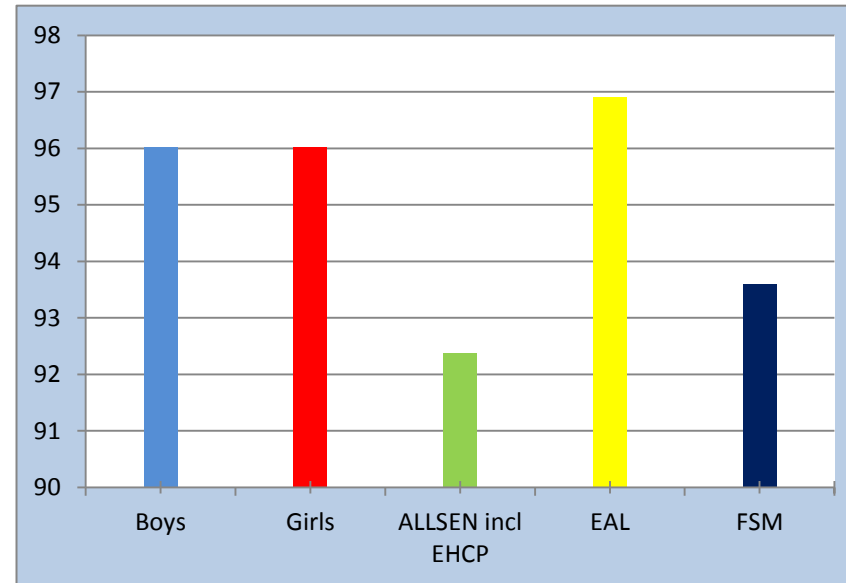
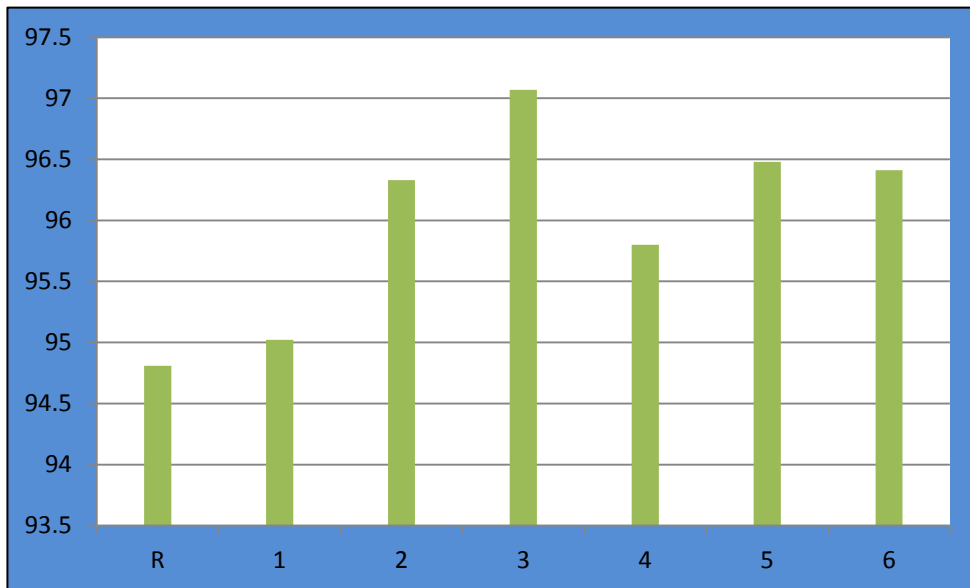
	Sep	Oct	Nov	Dec	Jan	Feb	Mar	Apr	May	Jun	Jul
<b>2014/15 &lt;90%</b>	17	27	26	24	31	33					
<b>2013/14 &lt;90%</b>	40	53	54	49	45	48	43	38	34	36	36
<b>2014/15 &lt;85%</b>	11	9	8	11	10	11					
<b>2013/14 &lt;85%</b>	26	17	23	22	15	11	7	6	7	7	7



Year	2014/15
R	94.81
1	95.02
2	96.33
3	97.07
4	95.8
5	96.48
6	96.41

No. of children between 95-100%	263
No. of children between 90-95%	81
No. of children between 85-90%	22
No. of children below 85%	11

Sub groups	% attendance
Boys	96.02
Girls	96.02
ALLSEN incl EHCP	92.38
EAL	96.9
FSM	93.6



### Group Analysis by attendance code

B Educated off site	C other authorised circumstances	E exclusion	G family holiday (not agreed)	H holiday agreed	I illness	L late (before close of register)	M medical/ dental appointment	N no reason yet provided	O unauthorised absence	R religious observance	U late (after the close of register)
31	85	12	215	14	2108	311	188	40	475	0	42

