





# THE BROMLEY SCHOOLS' COLLEGIATE

*Outstanding Teacher Training in London and the South East.*



# WHO WE ARE

*We are an established Initial Teacher Training (ITT) provider with over 25 years of experience in training career teachers. We offer practical training in outstanding schools, with experienced practitioners to mentor you through the course.*

*Our schools offer excellent opportunities for future employment with over 60% of trainees appointed to their first teaching post in a partnership school.*

Trainees are based in two schools within the consortium, observing lessons and gradually building up to planning and teaching lessons themselves. Trainees attend weekly General Professional Studies sessions to support their work towards academic assignments and to consider the practical application of theory to teaching and learning.

The training programme is personalised to meet individual needs and all trainees are fully supported by both the central office and the placement schools.

Trainees are required to build an e-portfolio which records their professional and subject knowledge development in order to demonstrate that all standards required for Qualified Teacher Status have been met.



Mr Derek Boyle  
SCITT Director





# INITIAL TEACHER TRAINING FEATURES

Our School Centred Initial Teacher Training (SCITT) is designed to combine the best features of extended experience in placement schools with outstanding central training. Through spending four days each week in your placement school throughout your training year, you will quickly gain confidence and competence in your ability to teach.

Each week you will have a central training session which will contextualise your experience in school and you will work with trainers who are either outstanding teachers themselves or national experts in their field.

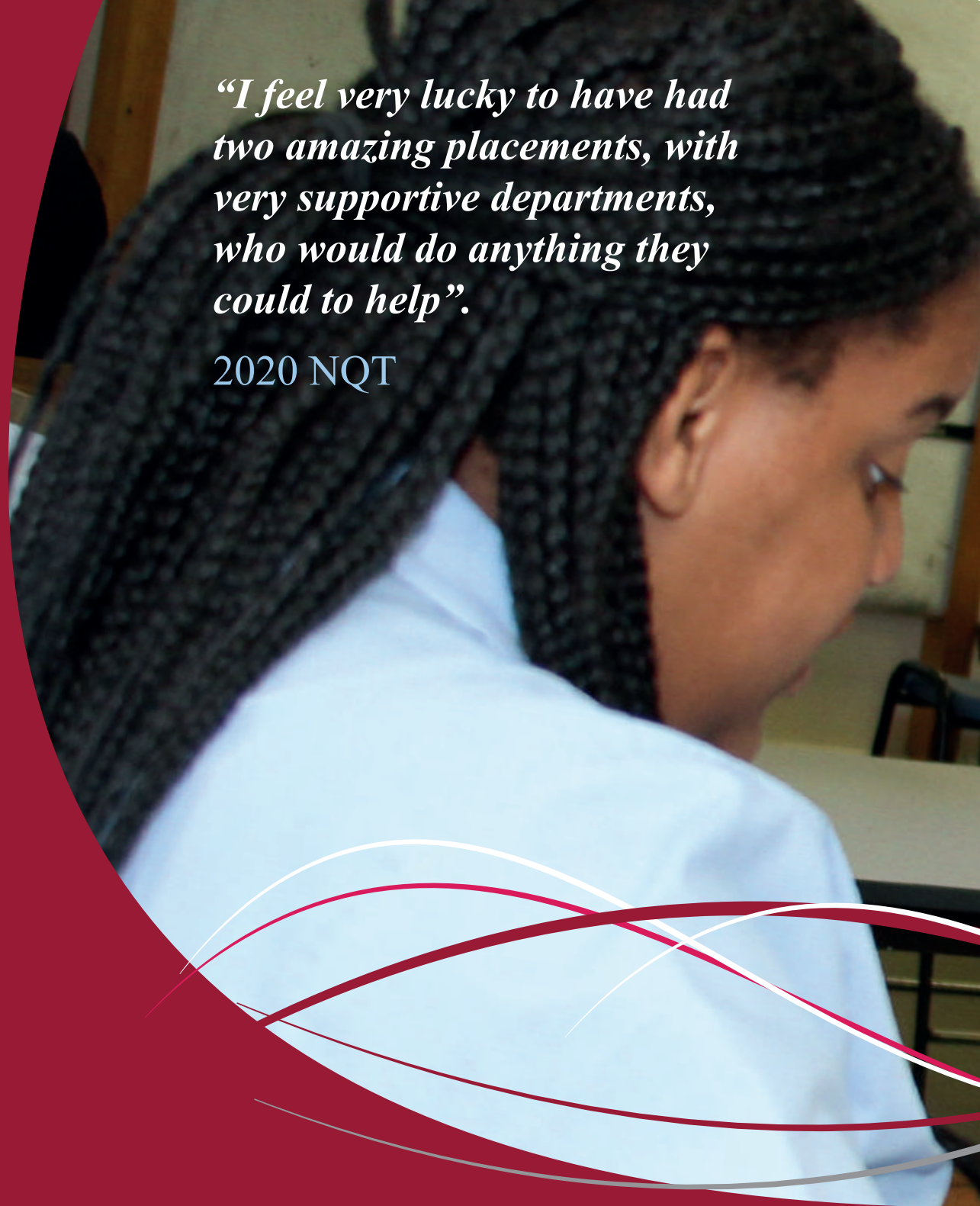
Your central training is supplemented by weekly mentoring with a school-based specialist mentor and a tutorial with a senior mentor, along with a group of other trainees.

These sessions will help you develop your understanding of effective professional practice and prepare you for your first employed post as a Newly Qualified Teacher (NQT).

All of our programmes lead to Qualified Teacher Status (QTS) with the option of a PGCE for tuition fee and salaried routes.

*“I feel very lucky to have had two amazing placements, with very supportive departments, who would do anything they could to help”.*

2020 NQT











*“Support was consistent throughout and I have really benefited from the learning as you go approach”.*

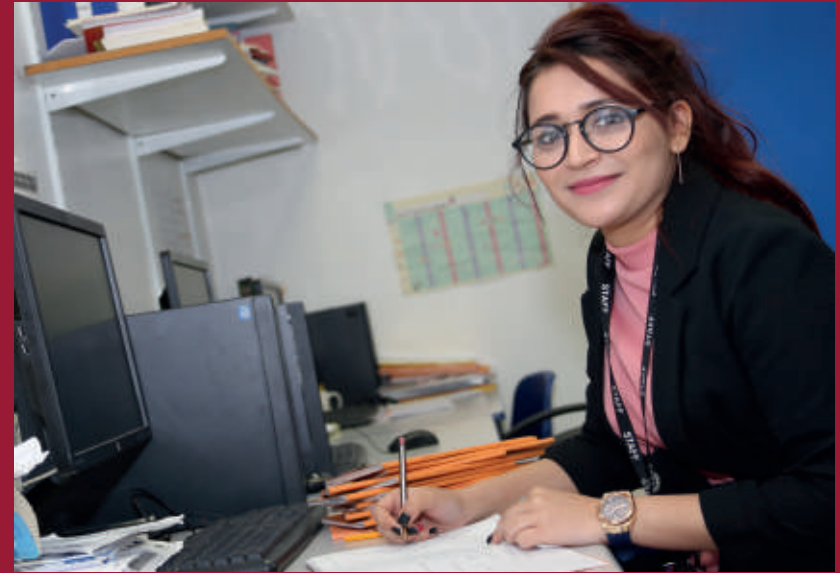
**2020 Trainee**

# PRIMARY ITT

Our Primary Initial Teacher Training programme is designed to equip our trainees with the knowledge, skills and experience to qualify as teachers who are ready to teach in their first teaching role. Training sessions are delivered by expert teachers who can relate theory to practice and are able to contextualise the training to the realities of teaching in the classroom.

Trainees are supported in both placements, by individual school based mentors, who advise on how they can develop their subject knowledge for teaching, the pedagogy needed to enable the children to learn and the holistic role of the teacher in the education of the whole child. Weekly group tutorials help trainees to contextualise their training and to discuss their wider professional responsibilities as teachers.

Although no prior experience of working or work experience within schools is required at the point of application, you should have demonstrable experience of working with children in some capacity. If you are successful at interview, we will arrange some further work experience if we feel it would better prepare you for starting the course.



## Entry Requirements

- Good Honours Degree
- GCSE grade A\*- C/ 4+ in English, Mathematics and Science
- Ability to travel to and between partnership schools

Please note that we do not accept commercially available equivalency tests for GCSE grades A\*- C/ 4+. If you have any questions about the equivalency of your qualifications, please contact the office in the first instance.



# MIDDLE YEARS ITT

## (7 to 14 years old)

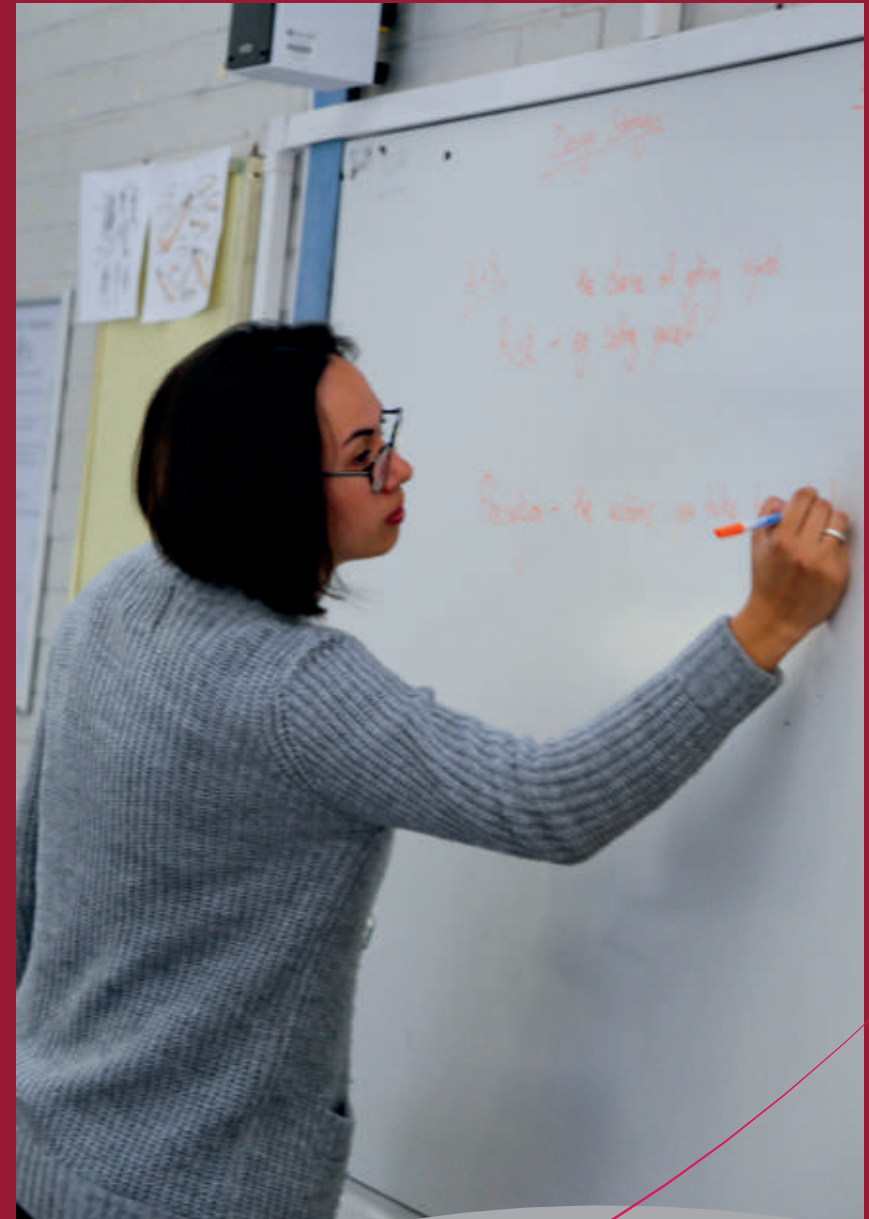
This Initial Teacher Training programme enables trainees to gain experience in teaching lower Secondary age and upper Primary age pupils.

It is designed to bring subject specialists into the Primary teaching workforce and also to enable those working in Secondary schools a good grounding in how to support those children who may be coming up into Secondary who are working below age expectations.

The tuition fee programme will include two placements with the first one from September to December in a Primary School, teaching year 5 and 6 pupils. This is then followed by a contrasting placement in a Secondary School teaching your specialist subject to KS3 pupils and then finally in the Summer Term, teaching years 3 and 4, back in your placement Primary School.

For this programme, you would be eligible for the Secondary tax-free bursary rates for your specialist subject.

This programme leads to Qualified Teacher Status with the option of a PGCE.











A-Level  
Computer  
Science

Key Dates

News & Careers  
Information

Graph  
Averages

Being Responsible



# SECONDARY ITT

Our Secondary Initial Teacher Training programme is designed to train subject specialist teachers for the 11 to 18 age range.

Trainees are supported to develop as expert subject teachers through central training sessions, weekly mentoring meetings, weekly group tutorials and regular subject specific training.

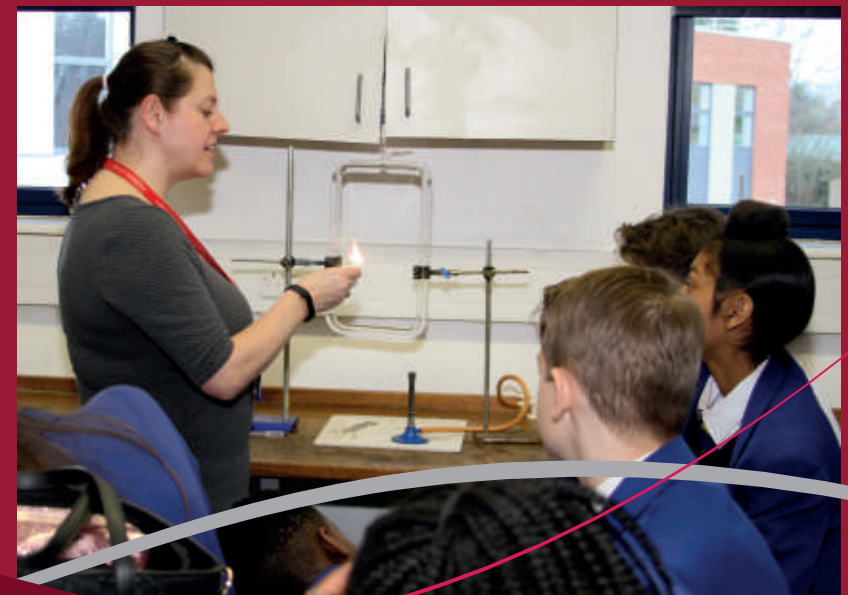
## Entry Requirements

- Good Honours Degree
- GCSE grade A\*- C/ 4+ or equivalent in English and Mathematics
- Ability to travel to and between partnership schools



Although no prior experience of working or work experience within schools is required at the point of application, you should have demonstrable experience of working with children in some capacity. If you are successful at interview, we will arrange some further work experience if we feel it would better prepare you for starting the course.

Within your application you should explain how you want to put the interests of children and young people at the centre of everything that you want to do as a teacher. We are looking for teachers that want to provide holistic development of the child or young person.



# ASSESSMENT ONLY ROUTE

This route is available to graduates working as unqualified teachers or instructors in schools or educational settings who can gain QTS while working. This route takes 3 months and you must have two years' experience of whole class teaching across the key stages that you wish to qualify in, prior to commencing this route.

In order to be eligible for the AO route you must fulfil the following requirements:

- ▶ Two years of whole class teaching experience
- ▶ Experience of teaching in two educational settings
- ▶ UK Honours Degree or equivalent
- ▶ GCSE English and Mathematics at grade C and above (for Primary, this must also include GCSE Science)
- ▶ Pass in both professional skills tests
- ▶ Support from your employing school

This is an intensive route to achieving QTS for staff who are teaching within an educational setting as an unqualified teacher.







*“I think the courses  
are fantastic. There  
is a great emphasis  
on independence  
and freedom”.*

2020 NQT



# ADDITIONAL SERVICES

Bromley Schools' Collegiate support for teachers undertaking Initial Teacher Education extends into their NQT year and beyond.

We are now proud to be working in partnership with Darrick Wood and Hayes Secondary Schools to undertake the NQT Appropriate Body function for Primary and Secondary Schools.

As part of this service, we provide training for NQT induction tutors, registering of NQTs and checking of induction reports, as well as telephone advice and guidance to schools, headteachers and induction tutors.

For further details of our pricing for this service, please contact the office.

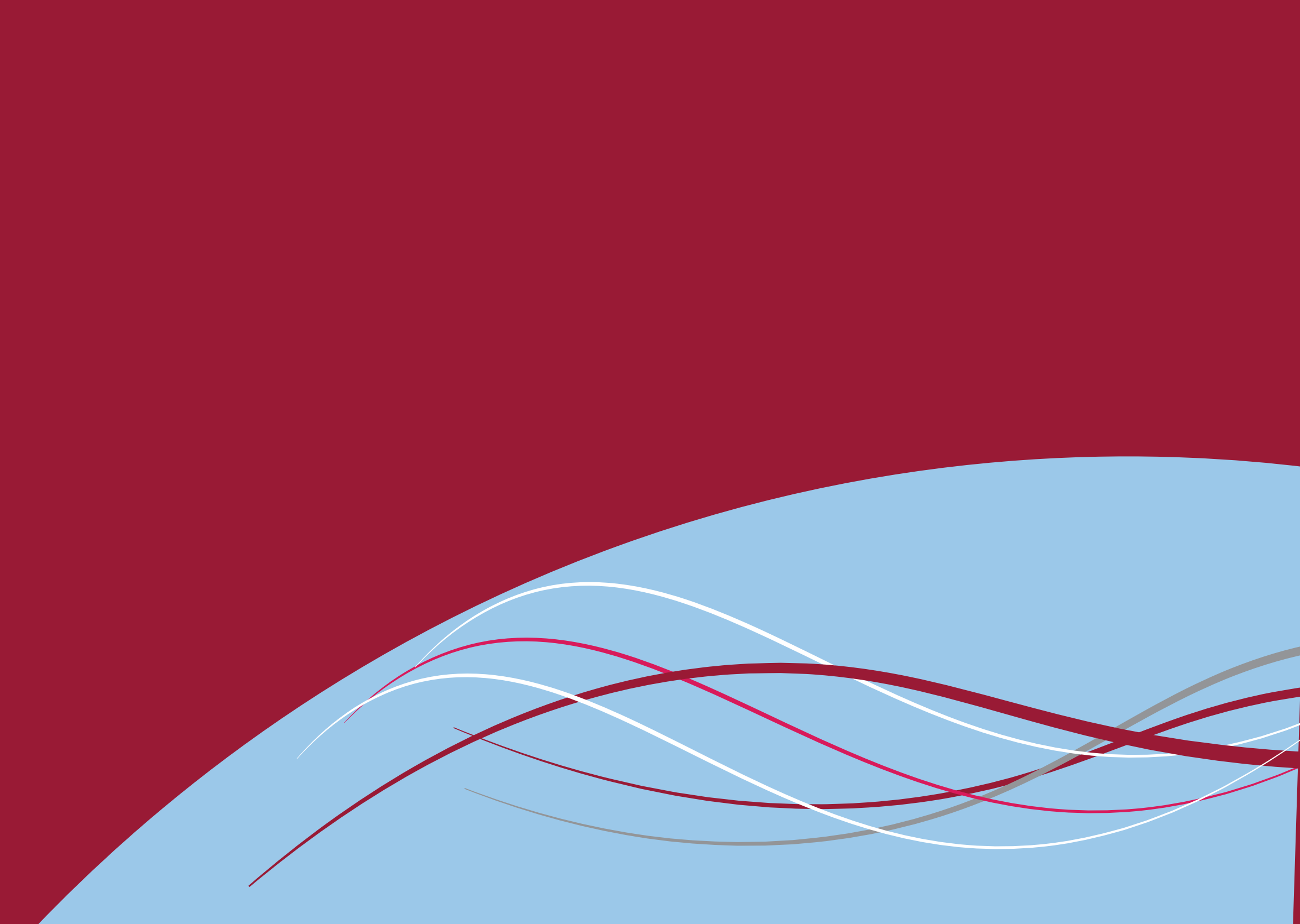


# CONTINUING PROFESSIONAL DEVELOPMENT

We offer a range of training courses for teachers, either in their NQT year or beyond, who are looking to deepen their knowledge and understanding of a range of topics.

We can offer training on a wide range of topics to meet the needs of individuals, or groups of teachers, in the Primary and Secondary sectors.





# FIND US

We have schools situated in both the South East of London and also in East Sussex

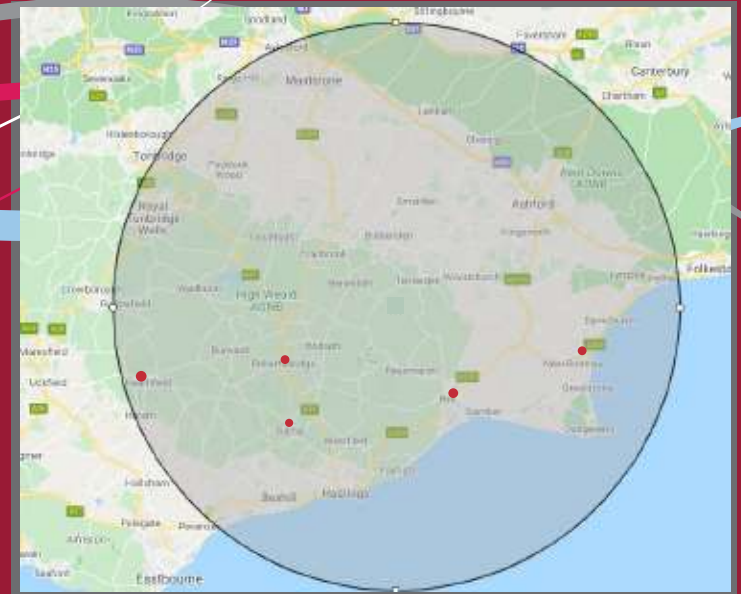
# CONTACT US

Bromley Schools' Collegiate

[www.bscteach.co.uk](http://www.bscteach.co.uk)

Telephone: 020 8300 6566

Email: [administrator@gradteach.uk](mailto:administrator@gradteach.uk)



East Sussex



SE London